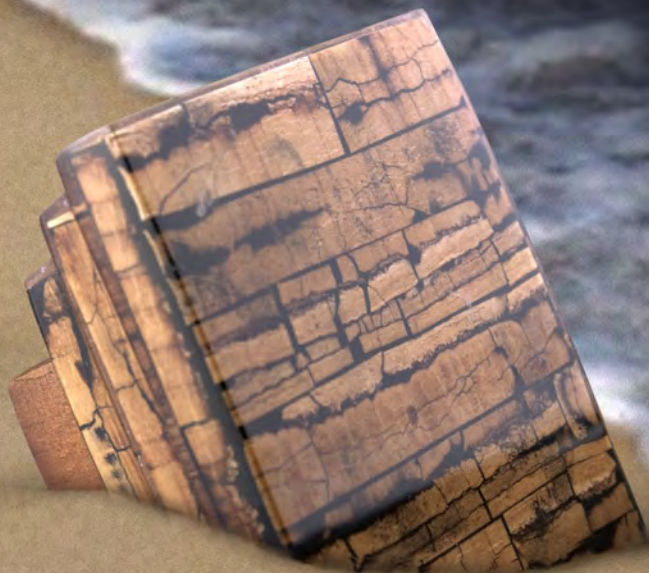


# *Natural Elements* COLLECTION *by Kashmir*





*Distinctive Solutions*  
by Kasmir

*Natural Elements* is Kasmir's latest offering in our *Distinctive Solutions* line of decorative hardware.

The collection features sensational finials and holdbacks made of natural, organic components that are finished to compliment modern day living. Each piece is infused with shells, bamboo, vines and other primitive materials, adding charisma and allure.

*Natural Elements* combines the character of nature with the glamour of fine interior décor. It's a global collection your customers will love.



## *Natural Elements* COLLECTION

**2** FINIALS  
HOLDBACKS

**8** ENDCAPS

**9** COLLARS

**10** RINGS

**11** WANDS

**12** BRACKETS  
POLES

**14** CUSTOMIZING  
YOUR DESIGN

**16** SAMPLE CHIPS  
DISPLAY CASE

**17** PROCEDURES  
INFORMATION



# BALL FINIAL & HOLDBACK



*NE Ball 1  
Smoked Pen Shell  
(With chocolate base)*



*NE Ball 2  
Rubber Tree Leaf  
(With honey base)*



*NE Ball 3  
Wicker  
(With chocolate base)*



*NE Ball 2  
White Coco Shell  
(With honey base)*



*NE Ball 1  
String Bean  
(With chocolate base)*



*NE Ball 2  
Kapok Leaf  
(With chocolate base)*



*NE Ball 1  
Young Bamboo  
(With honey base)*



*NE Ball 1  
Ampion  
(With chocolate base)*



*NE Ball 1  
Sig id Grey  
(With honey base)*



*NE Ball 2  
Cut Pen Shell  
(With chocolate base)*



*NE Ball 1  
Sig id Brown  
(With chocolate base)*

Please note:  
Bases are attached as shown.



# ROUND STEP

## FINIAL & HOLDBACK



*NE Round Step 2*  
*Rubber Tree Leaf*



*NE Round Step 3*  
*Wicker*



*NE Round Step 1*  
*Smoked Pen Shell*



*NE Round Step 2*  
*White Coco Shell*



*NE Round Step 1*  
*String Bean*



*NE Round Step 2*  
*Kapok Leaf*



*NE Round Step 1*  
*Young Bamboo*



*NE Round Step 1*  
*Ampion*



*NE Round Step 1*  
*Sig id Grey*



*NE Round Step 2*  
*Cut Pen Shell*



*NE Round Step 1*  
*Sig id Brown*



# SQUARE STEP

## FINIAL & HOLDBACK



*NE Square Step 2*  
*White Coco Shell*



*NE Square Step 1*  
*Sig id Grey*



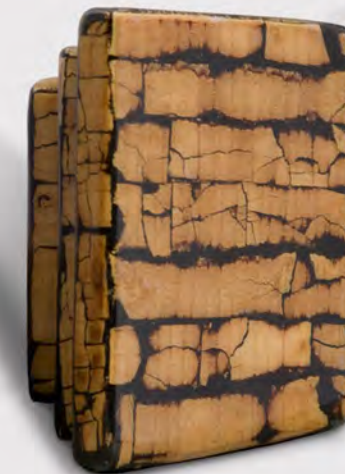
*NE Square Step 1*  
*Young Bamboo*



*NE Square Step 2*  
*Cut Pen Shell*



*NE Square Step 1*  
*String Bean*



*NE Square Step 1*  
*Ampion*



*NE Square Step 1*  
*Sig id Brown*



*NE Square Step 3*  
*Wicker*



*NE Square Step 2*  
*Rubber Tree Leaf*



*NE Square Step 2*  
*Kapok Leaf*



*NE Square Step 1*  
*Smoked Pen Shell*



# ENDCAPS

## METAL & WOOD



*NE ENDCAP RM 1*  
Antique Brass



*NE ENDCAP RM 2*  
Brushed Bronze



*NE ENDCAP RM 1*  
Brushed Steel



*NE ENDCAP SM 1*  
Antique Brass



*NE ENDCAP SM 2*  
Brushed Bronze



*NE ENDCAP SM 1*  
Brushed Steel



# COLLARS

A connector is included with each collar.

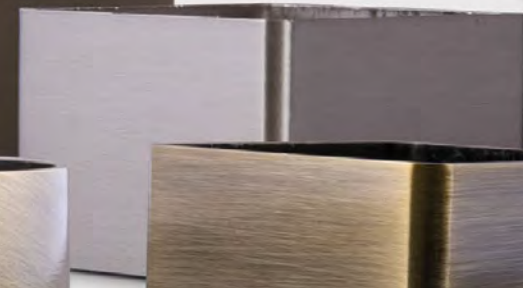
*NE Collar R2*  
Brushed Bronze



*NE Collar S2*  
Brushed Bronze



*NE Collar S1*  
Brushed Steel



*NE Collar S1*  
Antique Brass



*NE Collar R1*  
Brushed Steel



*NE Collar R1*  
Antique Brass



Collars are used to connect finials to poles.  
Like shapes must be used.





# RINGS

## METAL & WOOD

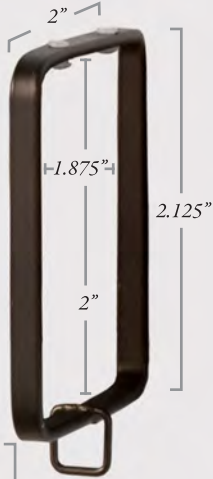
NE 400 SM 1  
Brushed Steel



NE 400 SM 1  
Antique Brass



NE 400 SM 2  
Brushed Bronze



NE 400 RM 1  
Brushed Steel



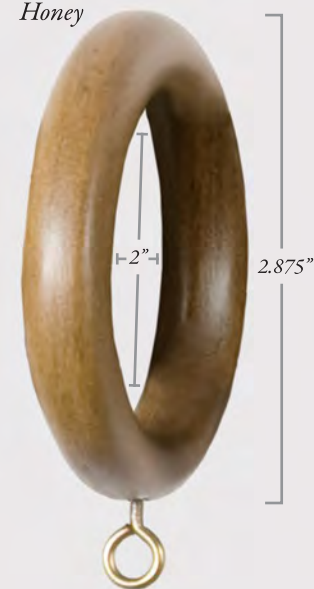
NE 400 RM 1  
Antique Brass



NE 400 RM 2  
Brushed Bronze



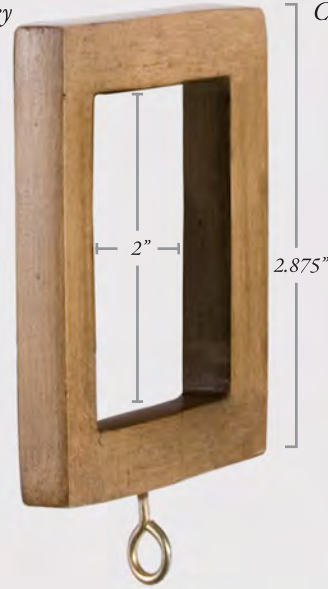
NE 400 RW  
Honey



NE 400 RW  
Chocolate



NE 400 SW  
Honey



NE 400 SW  
Chocolate



The square metal rings feature plastic inserts for reduced friction and better glide.  
Kasmir recommends 6 to 7 rings per width of fabric.

# WANDS & HANDLES

## METAL WAND

NE 500 1

Brushed Steel

NE 500 1

Antique Brass

NE 500 2

Brushed Bronze



36"

## WOOD HANDLE

NE 501

Chocolate

NE 501

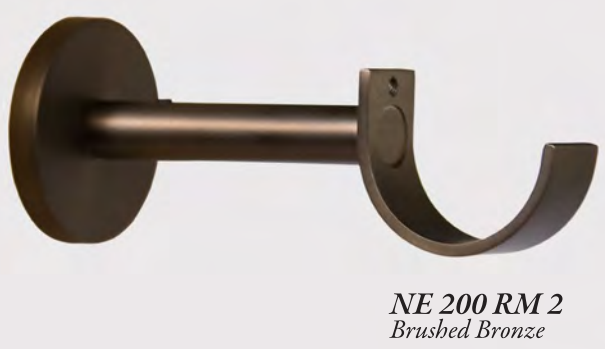
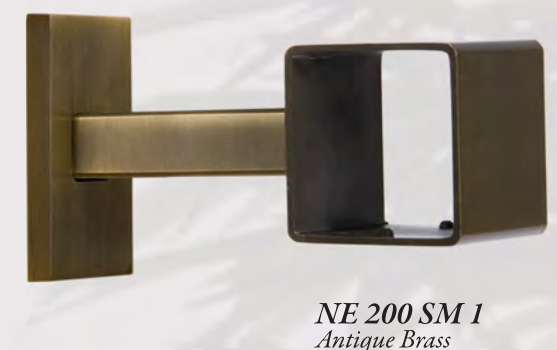
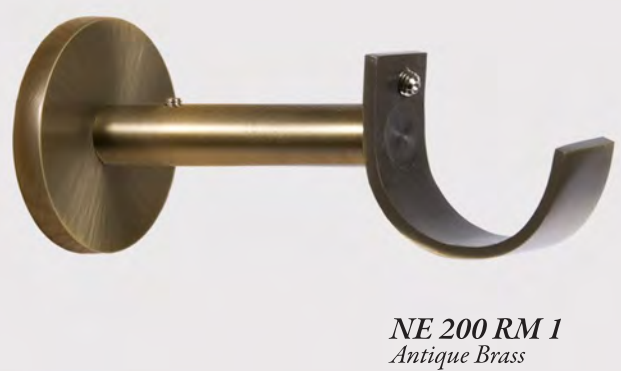
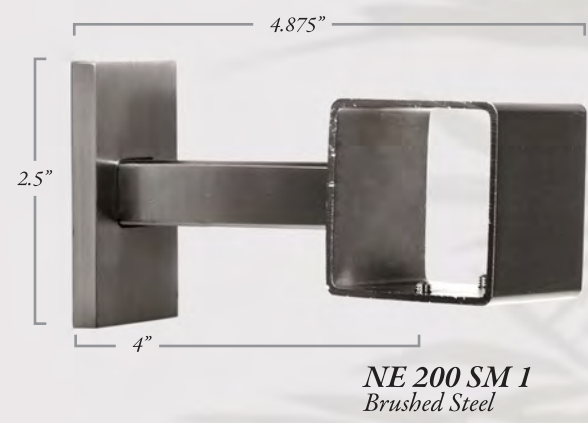
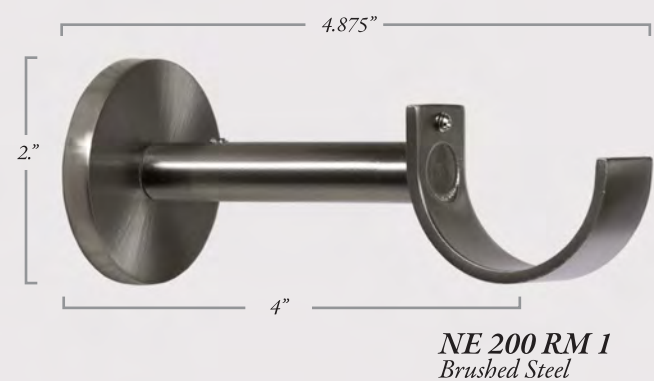
Honey





# BRACKETS

## WOOD & METAL



# POLES

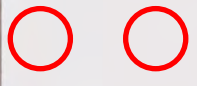
**ROUND POLE**  
6ft. - NE 100 6R  
8ft. - NE 100 8R

**SQUARE POLE**  
6ft. - NE 100 6S  
8ft. - NE 100 8S

Poles are shown actual size.



# HOLDBACK BASE





# CUSTOMIZING YOUR DESIGN

1. Choose Finial Style.

## BALL



## ROUND STEP

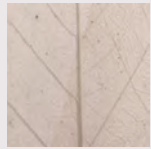


## SQUARE STEP



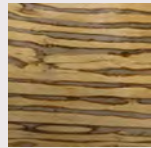
2. Choose Finish.

### Rubber Tree Leaf



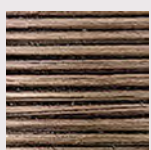
Leaves from mature rubber trees are soaked in a mild acidic bath dissolving all but the skeletal structure.

### Sig id Grey



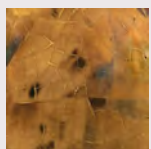
This vine is hard on the exterior, but soft and somewhat hollow on the inside. After inlay and sanding, the hollow portion becomes exposed giving this finish it's unique appearance.

### Wicker



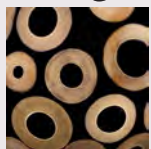
Rattan is a fast growing vine that climbs up the sides of trees and spreads throughout the canopies of Asian rainforests. Wicker is the inner core of the rattan pole.

### Cut Pen Shell



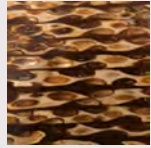
This finish is an inlay composed of the inner portion of a salt water clamshell, also known as a mollusk.

### Young Bamboo



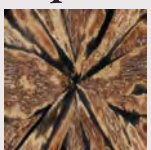
Bamboo is one of the fastest growing plants in the world, and some species can grow over one inch per day. For this finish, bamboo is sliced and arranged on the cut edge.

### String Bean



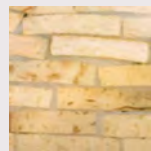
This material has nothing to do with string beans, but is the stem of a native grass in the Philippines. The stem is hollow, so when inlaid and sanded, the result looks like the inner portion of a string bean.

### Kapok Leaf



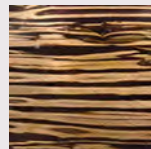
This inlay is the outer skin of the fruit of a tropical Kapok tree. The Kapok fruit is a large fruit with a fibrous, pulpy interior. When the skin is ground flat, the pulpy interior is exposed and that is what gives our inlay it's unique texture.

### White Coco Shell



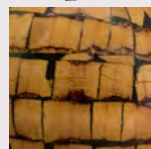
This finish is made from the outer shell of an immature coconut fruit.

### Sig id Brown



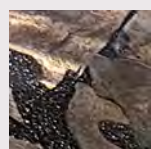
This vine is hard on the exterior, but soft and somewhat hollow on the inside. After inlay and sanding, the hollow portion becomes exposed giving this finish it's unique appearance.

### Ampion



This finish comes from a fruit grown in the Philippines with a long pod similar in appearance to a large snap pea. The tree from which the fruit is grown is known as the "fire tree" because of it's bright orange flowers.

### Smoked Pen Shell



Salt water clams are oven baked over a fire giving this finish it's smokey appearance and iridescence similar to that of mother of pearl.

3. Select wood pole and finish.

Poles are constructed of Gmelina, a sustainable, plantation grown tropical hardwood similar to Beechwood.

## Round Pole



## Square Pole



or

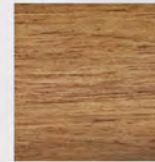
Collars, rings and brackets should match selected pole shape.

## Wood Finishes

Chocolate



Honey

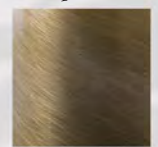


## Metal Finishes

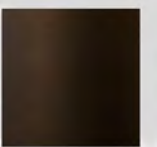
Brushed Steel



Antique Brass



Brushed Bronze



4. Select metal collar and finish.

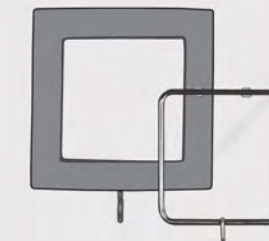
## Round Collar



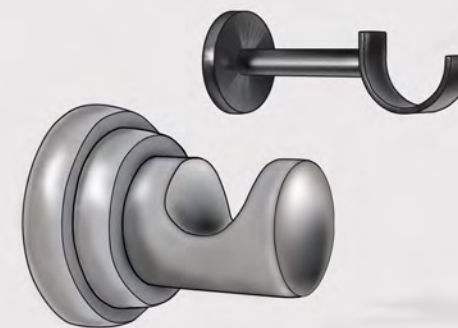
## Square Collar



5. Select wood or metal rings and finish. Rings come in packs of seven.



6. Select wood or metal brackets and finish.



7. Complete your creation by choosing a metal wand and wood handle to compliment your design.

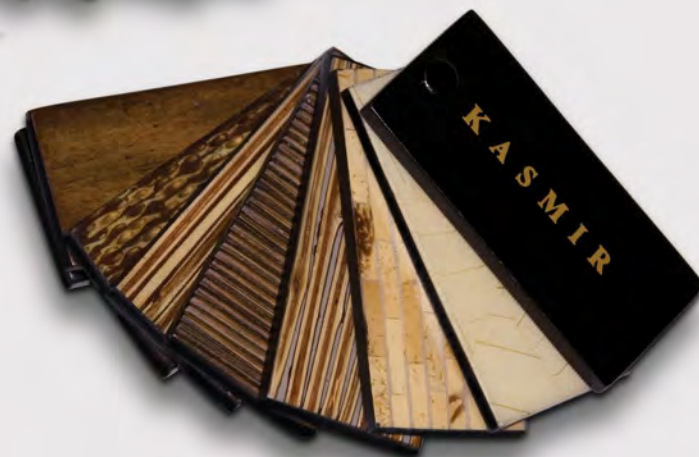




## SAMPLE CHIPS

The best sales tools are the ones your customers can touch. **Order your complimentary\* set of finial and wood finishes today.** See the Natural Elements price list for details.

\*One complimentary set per account. Subsequent sets available for purchase.



## DISPLAY CASE

Show the entire Natural Elements collection with confidence using this custom built display. This beautiful hardwood case includes:

- One of each finial style
- Collars featuring each metal finish
- A round and a square drapery pole
- Two stack set of finish sample chips

This stylish tool offers you a functional, professional presentation that will surely impress your customers.



### FINISHES & STAINS

- The hardware in this catalog and online have been carefully photographed for the best possible finish representation. Because of the differences in computer monitors, the colors shown may vary. For a true color match, please refer to the finish sample chips.
- Please ensure that your customer is aware of the color and pattern variations possible on any given piece in this collection because they are made from natural, organic materials, which is the beauty of this hardware.

### MEASURING

- Pole length does not include the size of the finials. The pole should extend a minimum of 4" on either side of the window.
- Brackets are designed to fit the poles in this collection. Projections are measured from the wall to the center of the pole as it rests in the bracket.
- All published measurements are approximate and can vary.

### INSTALLATION

- Kasmir strongly recommends using a professional installer to properly measure and install your hardware.
- A center support bracket is recommended for pole lengths over 6'. Poles without sufficient support may sag over time.
- Brackets should be installed into wall studs or used with wall anchors for proper support.
- Poles may be cut down to size on site. The wood should be cut with a fine tooth miter saw.
- Installation instructions will be shipped with your product and may also be found online at [www.kasmirfabrics.com](http://www.kasmirfabrics.com).

### PLACING AN ORDER

- Kasmir sells only to qualified retail businesses. Please refer to the current Kasmir Fabrics Retail Price List for complete credit terms and policies.
- Check stock, reserve stock or place an order online, by phone, fax or email.
- Your order will be acknowledged with a reference number and you will be advised of the inventory status or back order date if any.
- Hardware may be ordered with your fabric, trim or Custom Made order, but will be shipped separately.

## PROCEDURES AND INFORMATION

### IN STOCK POSITION

- Natural Elements is an "in stock" program with inventory maintained as aggressively as our fabrics and trimmings for prompt shipment.

### PACKING AND SHIPPING

- Every effort is made to ship your order the least expensive way without sacrificing the safety of your shipment. Insurance & handling will be included in your shipping charges.
- Hardware orders will ship separately from other products due to the nature of the packaging.
- Poles will incur an oversize charge.
- All shipments FOB Kasmir Dallas, Texas. We cannot drop-ship directly from our suppliers.
- Check all shipments carefully for damage before you sign for them. Any damages should be noted for the carrier claim or refused. Damaged or lost shipments should be reported to Kasmir immediately. Although our responsibility ends when the shipment is picked up from Kasmir, we will process the claim once the inspection has been completed and the claim information provided.

### RETURNS AND CREDITS

- Returns will not be accepted without prior authorization and are subject to Kasmir's return policies. Once approved, for UPS shipments, a UPS Authorized Return Service (ARS) tag will be mailed to your ship-to location. Place the tag on the outside of the returning package and give it to your UPS driver. A driver will not be sent specifically to pick up.
- Products must be inspected for quality, accuracy and acceptability upon receipt. We cannot allow credit for products that have been cut or altered in any way.
- Returns must be requested within 30 days of shipping and must be returned in the original packaging.
- For returns not due to Kasmir error, a 25% restocking fee plus shipping charges apply. This includes returns due to cancellation, duplication and incorrect ordering. Defective or incorrect products will be credited to your account at your cost plus shipping upon receipt and inspection of the return.
- Kasmir will not be responsible or liable for any installation charges.
- Replacement orders are shipped and billed to your account on "replacement" terms until the return is resolved.
- Please do not "anticipate" credits.

*The hardware in this catalog has been carefully photographed for the best possible finish representation.*

*Each piece is hand constructed with natural organic materials.*

*Variations are expected, which adds to the charm and beauty of these finishes.*





CORPORATE OFFICE  
3191 COMMONWEALTH DRIVE  
DALLAS, TEXAS 75247-6201  
PHONE: (800) 527-4630  
FAX: (800) 372-1718  
CUSTOM MADE FAX: (800) 631-8651  
[WWW.KASMIRFABRICS.COM](http://WWW.KASMIRFABRICS.COM)